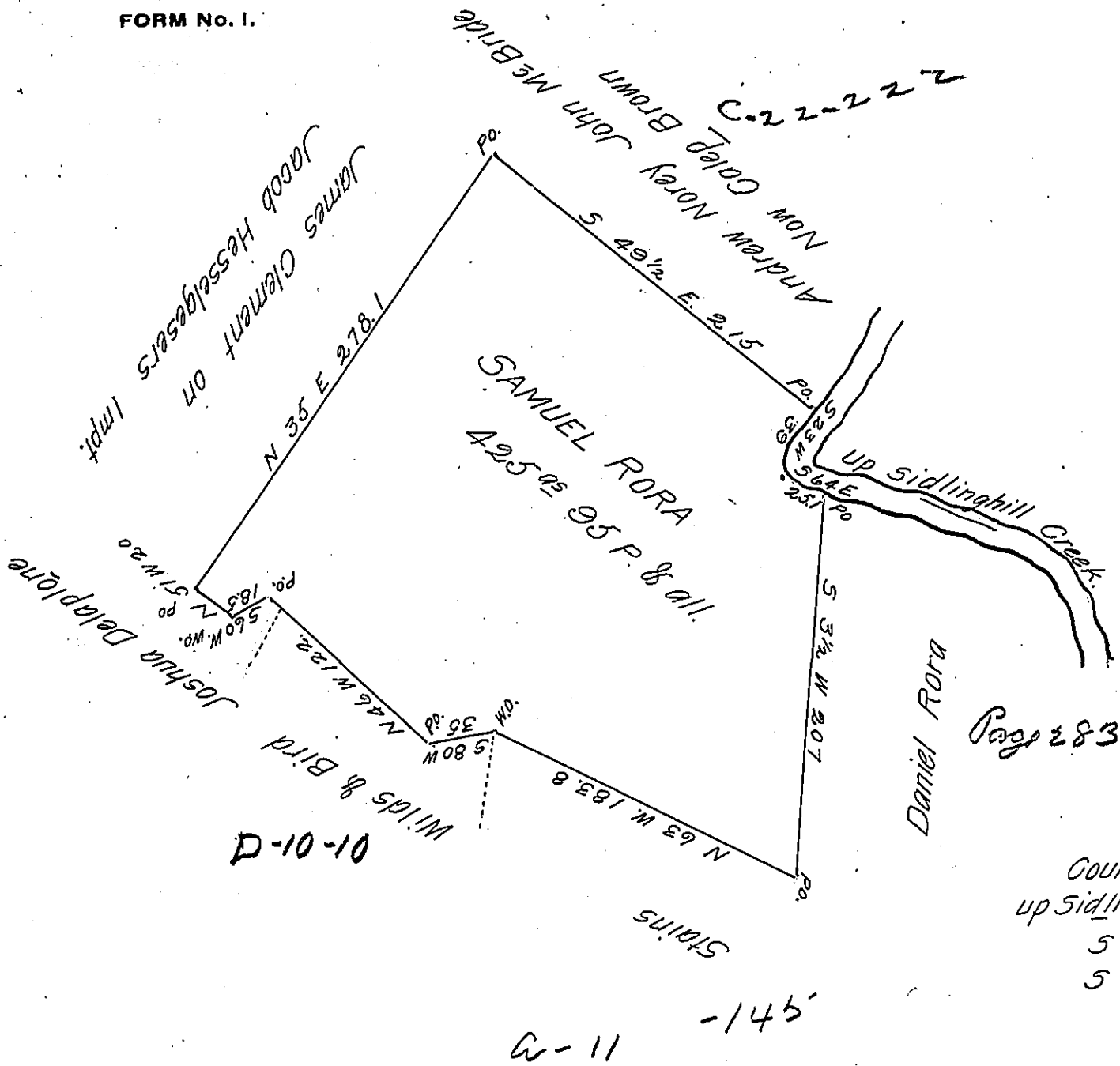


FORM No. 1.



Courses & Distance
 up Sidling Hill Creek
 S 23 W 30
 S 64 E 25.1

Situate in Spring ^{field} Township (Formerly Shirley) Huntingdon County Containing
 four Hundred & Twenty five acres & 95 perches & allowance Surveyed the 30th
 day of Aprile 1846 on Warrent to Samuel Rora dated the 15 day of March
 1816.

Sam^l Caldwell D.S.

John Laporte Esqr S.G.

IN TESTIMONY that the above is a copy of the original remaining on file in
 the Department of Internal Affairs of Pennsylvania, made
 conformably to an Act of Assembly approved the 16th day of
 February, 1833, I have hereunto set my Hand and caused
 the Seal of said Department to be affixed at Harrisburg,
 this twelfth day of October 1906.

Loacard Jones
 Secretary of Internal Affairs.